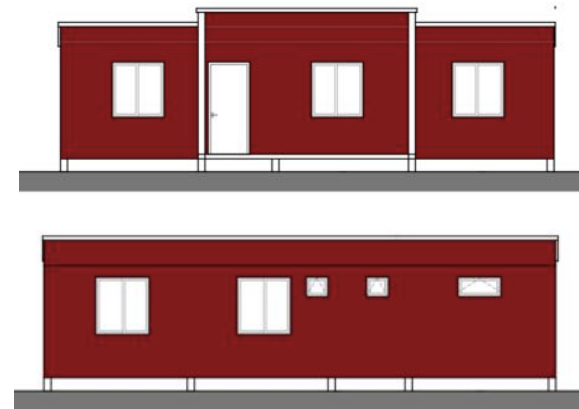
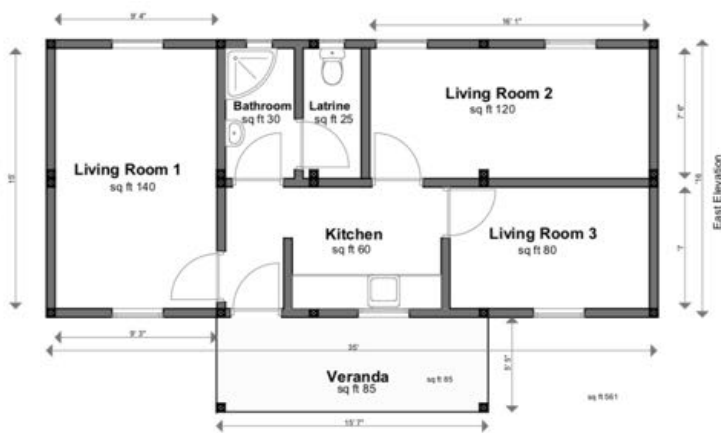
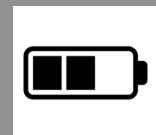


India: Tea Worker Houses



Improving Productivity and Improving Lives



Low cost, transportable houses, ready for deployment

fourLINK have developed easily transportable and affordable modular houses for tea pluckers and their families, in line with the Rainforest Alliance requirements and local Government Notification No.GLR. (RC)41/96/171 dated 22.08.2003.

The building sits on adjustable pads and so the finished floor level can be between 40-70cm off the ground, preventing rising damp and to remove downpour run-off and flood damage risk.

A built-in toilet and bathroom is included, with a composting toilet as an optional extra.

Relocatable and fireproof, these 561 sq. ft. buildings have an 85 sq. ft. covered veranda and are for a single family in line with Rainforest Alliance requirements on worker welfare. They contain three living rooms and a central kitchen.

The houses can be quickly deployed in villages with minimal site enabling works and can be easily moved to another location should this be required, or sold to release the residual value of the asset, should the Tea Estate wish to downsize.

The houses can also be easily moved and plugged together, walls can be removed or replaced should units be joined together or need modifying.

Optional photo voltaic electrical generation with battery back-up can also be added, meaning LED lighting both inside and outside illuminating the village - as well as electric cooking and hot water are possible, plus mechanical ventilation to keep the houses smoke free. Rainwater harvesting for cleaning and showering purposes is an optional extra.

The buildings are manufactured in India to local standards, using the local workforce.



For more details on the buildings or about consultancy services for applying the latest RA regulations, please contact us:



fourLINK

fourLINK Consulting Limited

71-75 Shelton Street, London, WC2H 9JQ, UK

www.fourlinkconsulting.com
info@fourlinkconsulting.com